



VERTICAL BAND SAWS

INSTRUCTION MANUAL AND PARTS LIST
MODEL TRADEMASTER – SECTION II

DAKE/PARMA



WHEN ORDERING PARTS

GIVE COMPLETE SERIAL NUMBER OF MACHINE
 GIVE PART NUMBER AND NAME
 GIVE AMOUNT REQUIRED

Unless the above data is included we cannot fill your order.

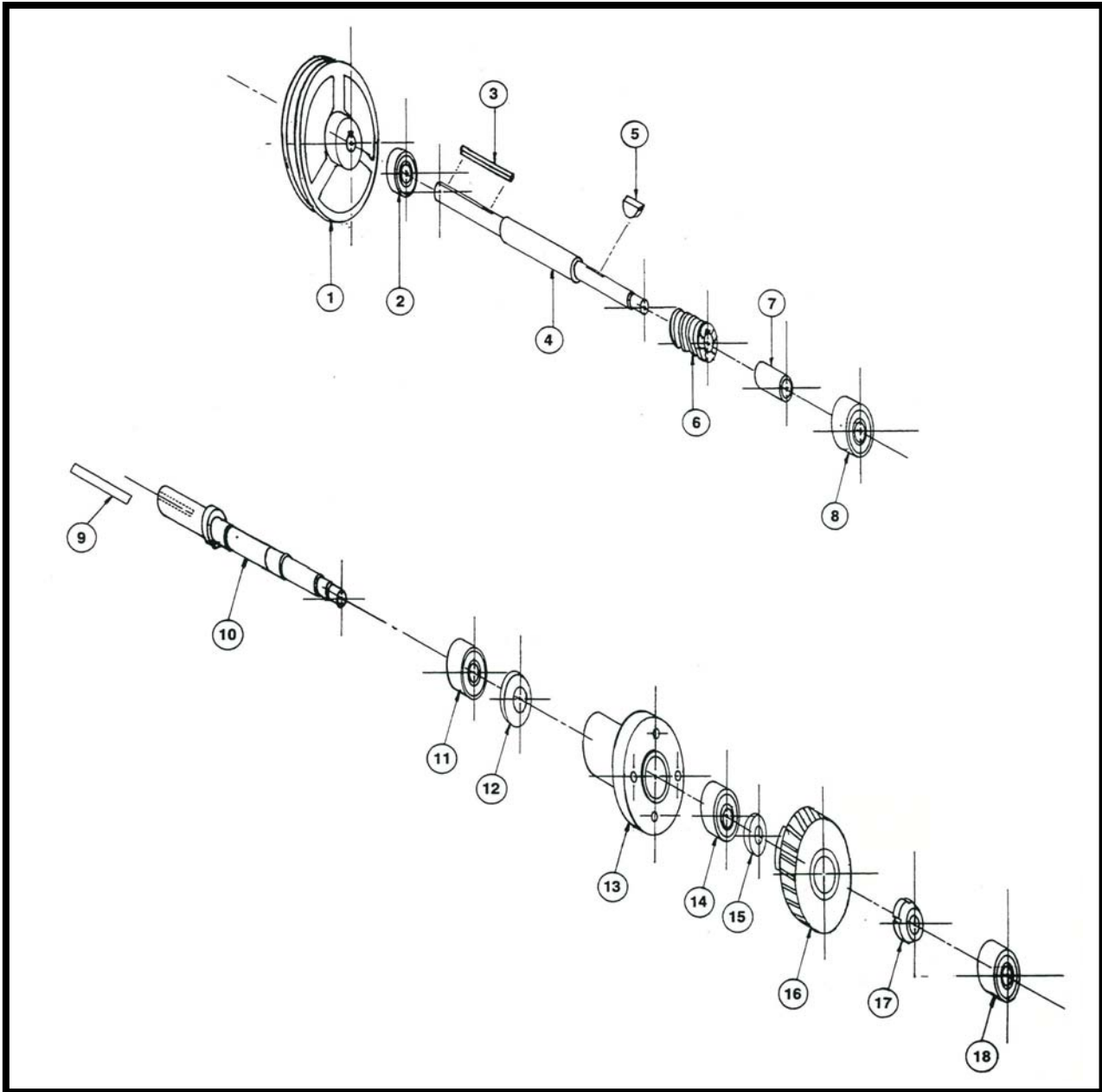
MODEL: _____

SERIAL NUMBER: _____

DATE PURCHASED: _____

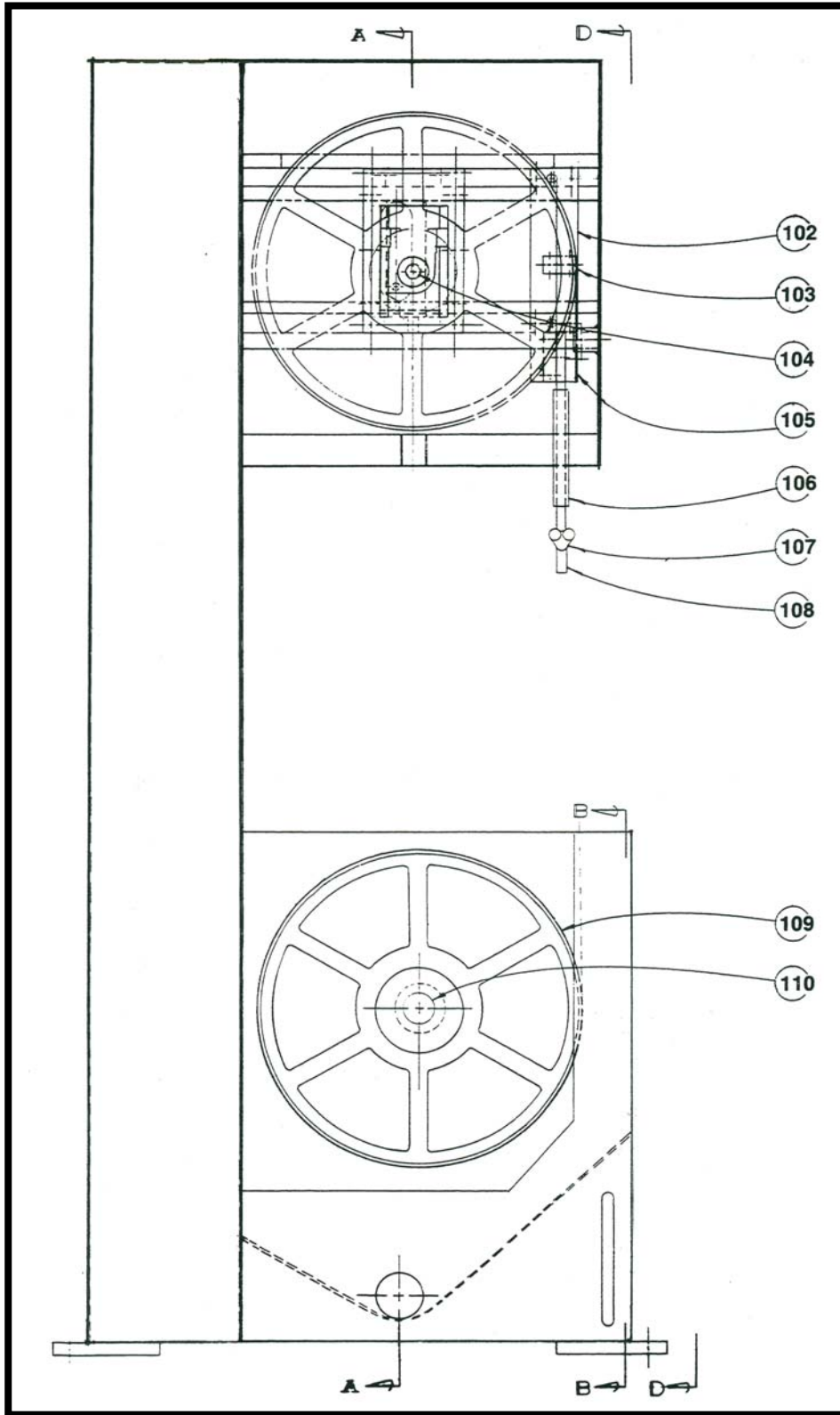
DAKE Division of JSJ
724 Robbins Road
Grand Haven, MI 49417

Phone: 616-842-7110 800-937-3253
 Fax: 616-842-0859 800-846-3253
 E-mail: technicalservice@dakecorp.com
 Website: www.dakecorp.com

GEAR BOX ASSEMBLY

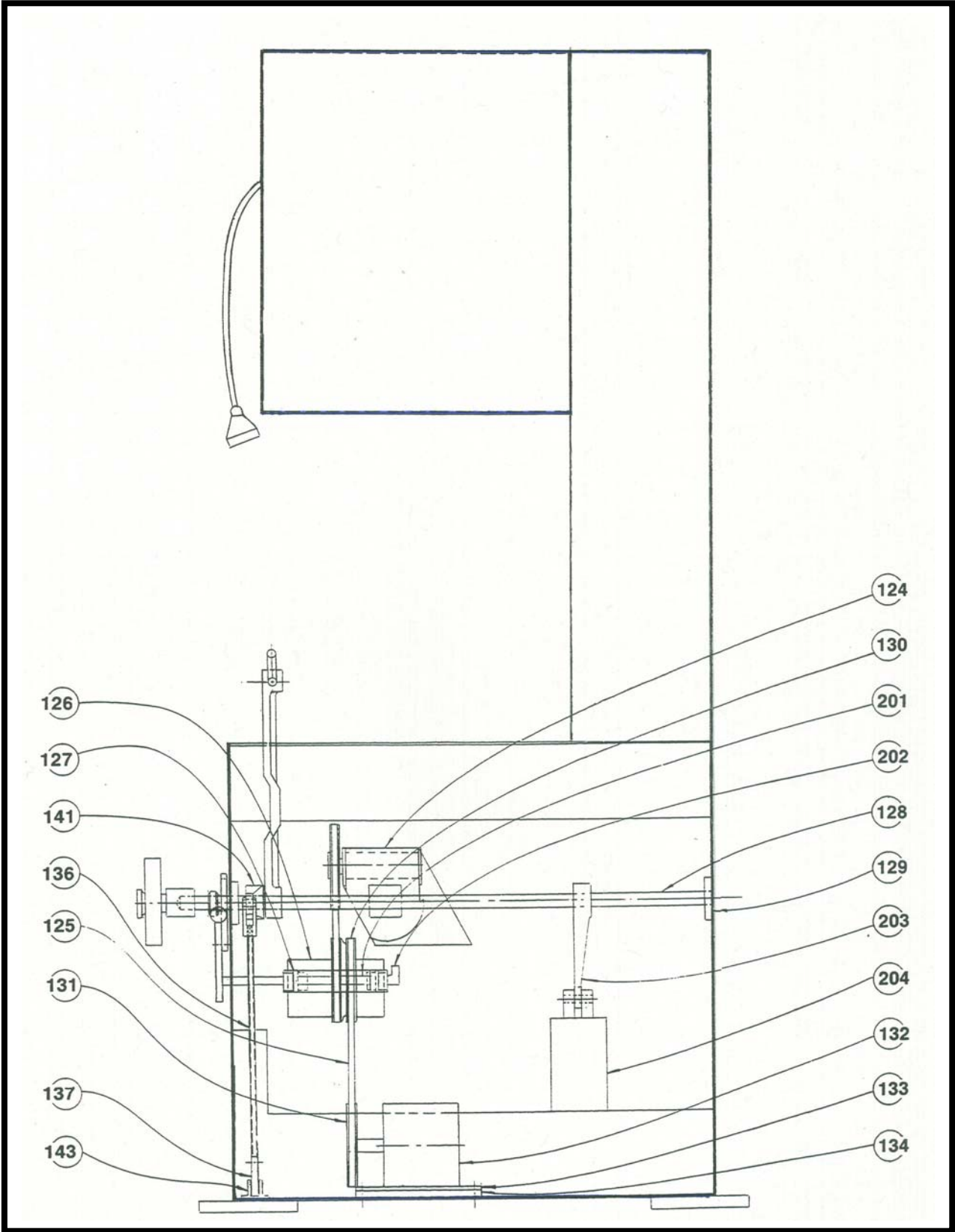
ITEM	PART NAME	PART NO.
1	Gear Box Pulley	300562
2	Bearing 204	300454
3	Key 3/16	77449
4	Main Drive Axle	86785
5	608 Woodruff Key	300449
6	Steel Worm Gear	300554
7	Spacer 1-1/8	86786
8	Bearing 303	300448
9	Key 5/16	300557

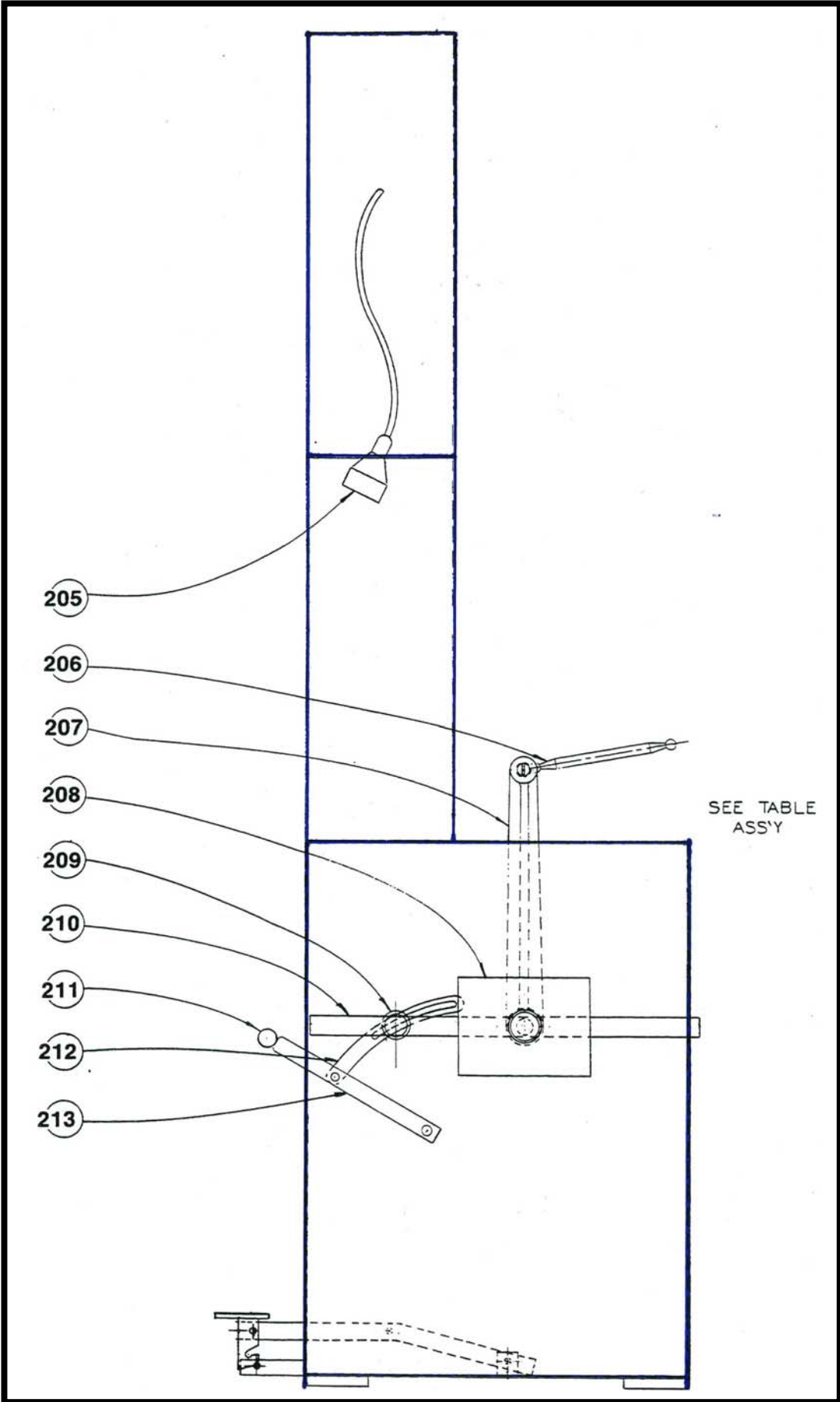
ITEM	PART NAME	PART NO.
10	TM Axle	86902
11	Bearing WC88026	300521
12	Seal CR 10123	300553
13	Gear Box Hub	86936
14	Bearing 205	300461
15	Spacer	86931
16	Bronze Gear	300665
17	No. 4 Lock Nut	300519
18	Bearing 303	300448



ITEM	PART NAME	PART NO.
102	Guide Bar Holder	86939
103	Guide Bar Cover Small	86910
104	Wheel Stud	
105	Guide Bar Cover Large	86909
106	Blade Guard	87012

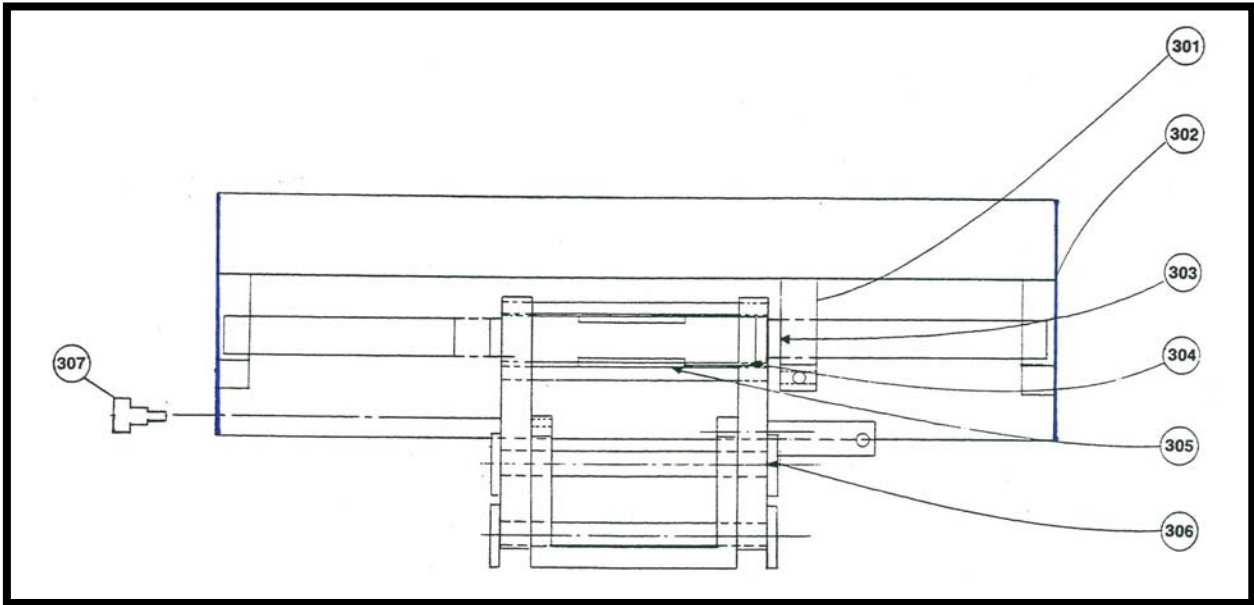
ITEM	PART NAME	PART NO.
107	Upper Blade Guide	
108	Guide Bar	86943
109	Lower Wheel	86974
110	Lower Wheel Washer	86920





ITEM	PART NAME	PART NO.
111	Wheel Base Rails	86826
112	Wheel Slide Base	86975
113	Wheel Slide	86937
114	Wheel Rocker	86938
115	Wheel Rocker Lock Stud	
116	Wheel Upper	716738
117	Blade Tension Screw	86919
118	Blade Tension Knob Assm	716729
119	Rocker Axle	86960
120	Wheel Axle	
121	Wheel Rocker Lock Knob	
122	Wheel Rocker Cant Knob	
123	Gear Box Pulley	300562
124	Gear Box	716737
125	V-Belt (2 each)	300561
126	Speed Selector Base	86970
127	Speed Selector Clevis	86946
128	Power Feed Axle	86949
129	Power Feed Axle Bearings	300570
130	Speed Selector	300559
131	Motor Pulley	300563
132	Motor	300600
133	Motor Mounting Plate	
134	Motor Mounting Rails	

ITEM	PART NAME	PART NO.
135	3/8"-24 Clevis	300556
136	3/8"-24 Threaded Rod	86930
137	Foot Pedal Lever	86952
138	Foot Pedal	300573
140	Foot Pedal Latch	86933
141	Foot Pedal Arm	86969
142	Hydraulic Cylinder	716720
143	Foot Pedal Clevis	300556
144	Hydraulic Cylinder Clevis	300556
	Wheel Rocker Lock Assm	716728
201	Speed Selector Axle	86924
202	Speed Selector Oil Cup	5032-00
203	Weight Lever Arm	86958
204	20# Counter Weight	86959
205	Work Light	300462
206	Table Connecting Ball Rod	86927
207	Table Feed Arm	86968
208	10# Counter Weight	86832
209	Speed Selector Lock Knob	300832
210	Counter Weight Arm	86948
211	Speed Selector Handle Knob	300450
212	Banana Arm	86956
213	Speed Selector Handle	86947



ITEM	PART NAME	PART NO.
301	Table Stop Lock	
302	Table Rail Clamps (4)	
303	Thompson Bearing Seal (4)	
304	Thompson Ball Bushing (4)	
305	Linear Bearing Housing (2)	
306	Rocker Ring Guide Axles (2)	
307	Cam Follower	
308	Workstop Table	
309	Table	

ITEM	PART NAME	PART NO.
310	7-1/2 HHCS (4)	
311	1" Table Rails (2)	
312	Rocker Rings	
313	Rocker Ring Guides	
314	Graduated Angle Plate	
315	Lower Blade Guides	
316	Rocker Ring Lock Assm	
317	Table Rocker Base	

